

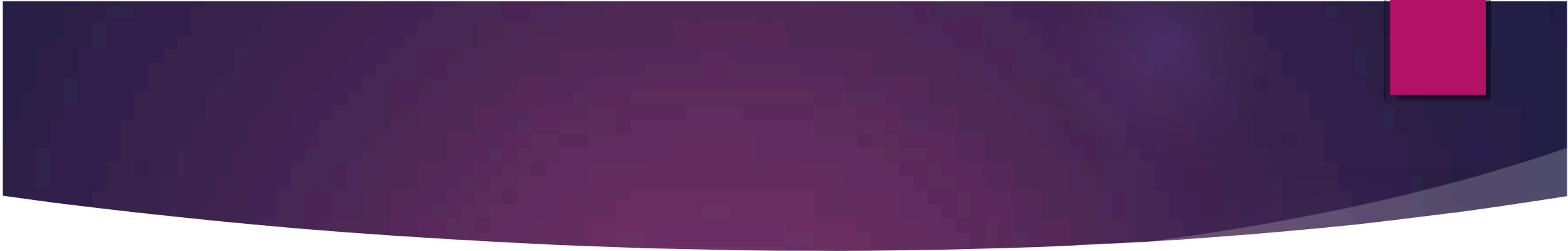


SS 49  
28<sup>th</sup> a  
2024

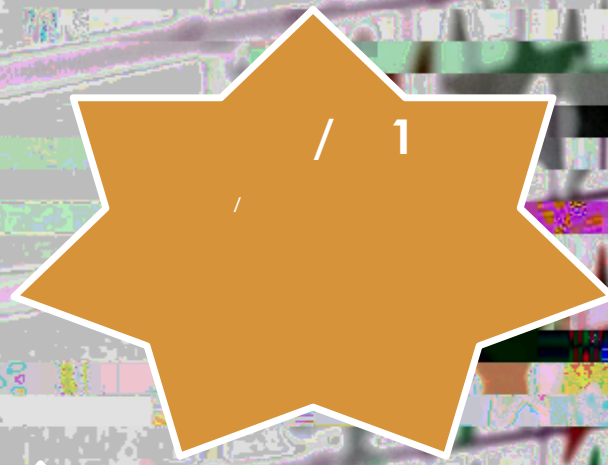
# Avanti Park



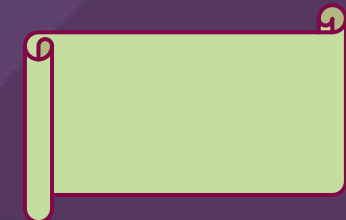
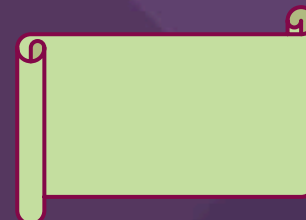
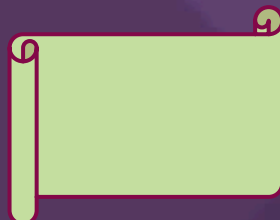
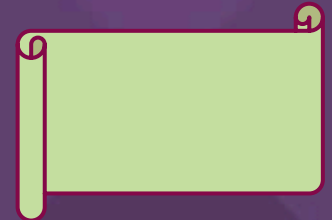
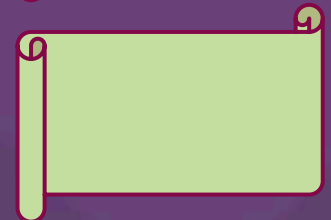
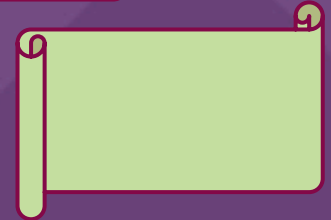
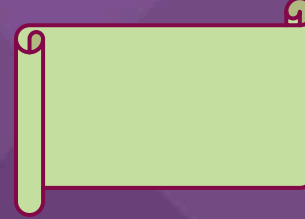
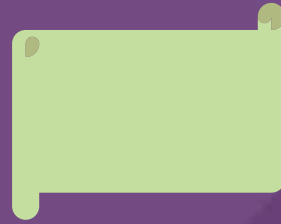
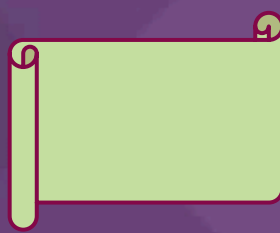
MESSAGE FROM THE  
PRINCIPAL







# Principals Award



# Notices



[Additional PE Teacher](#)

Interview Date - 23rd April  
2024

Click below for more info:



[Comic Relief](#)

[Woodchip needed!](#)

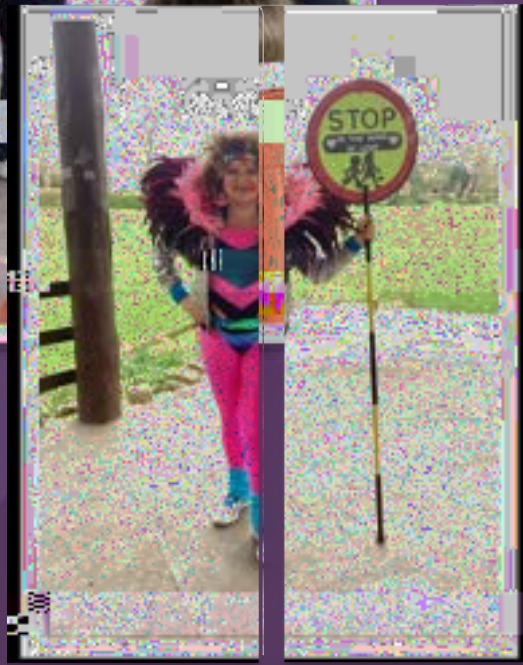






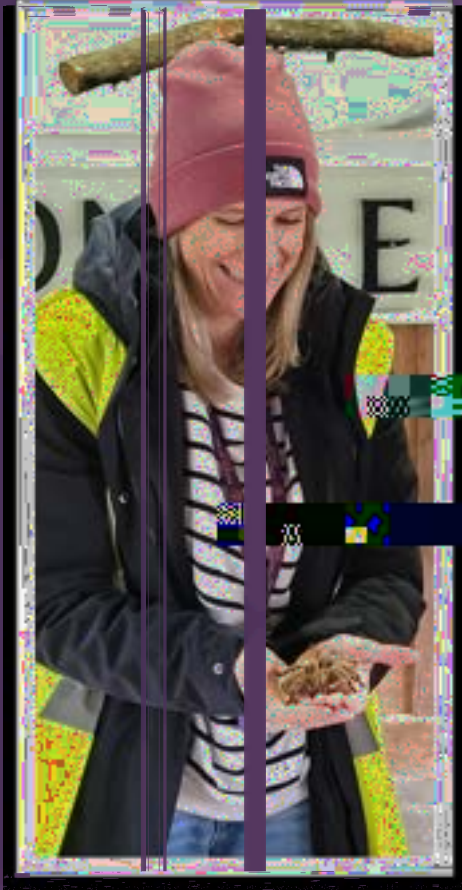
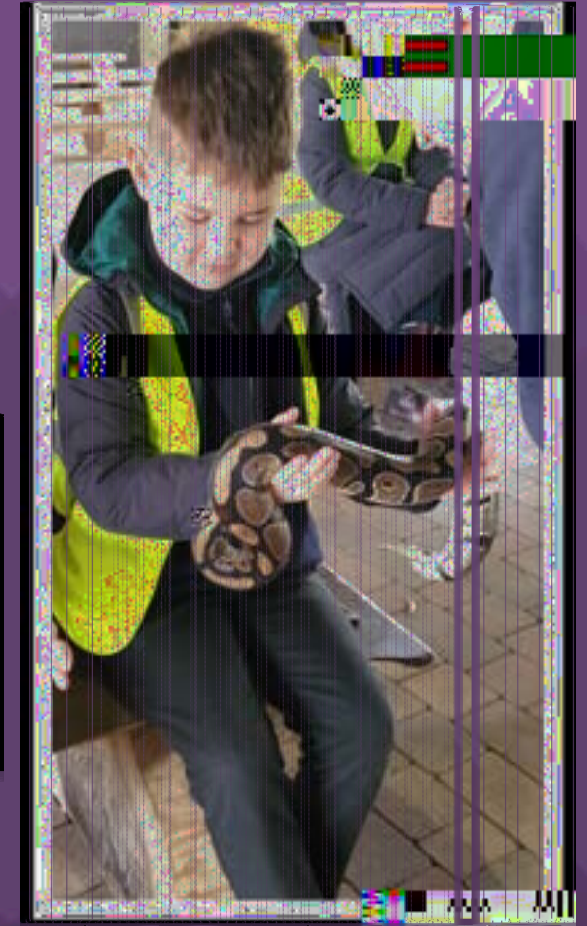
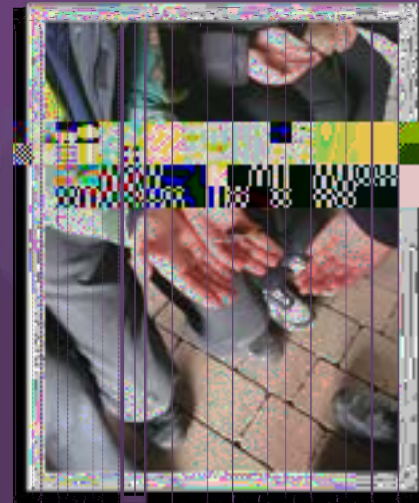


# The Big Walk & Wheel

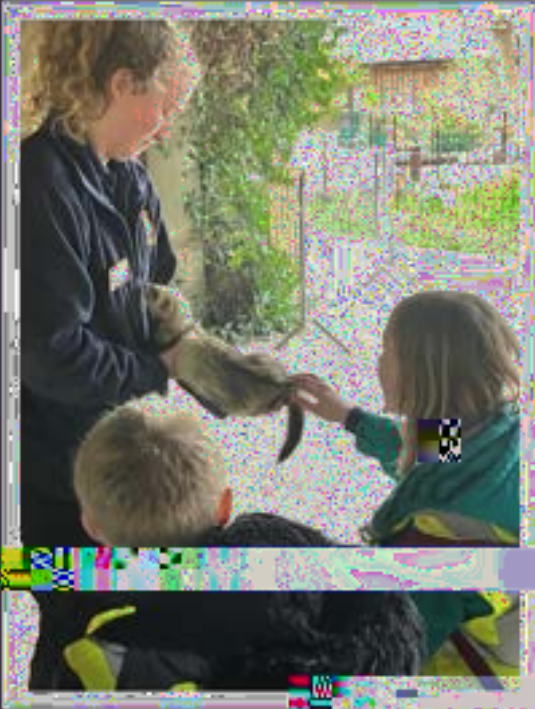


th

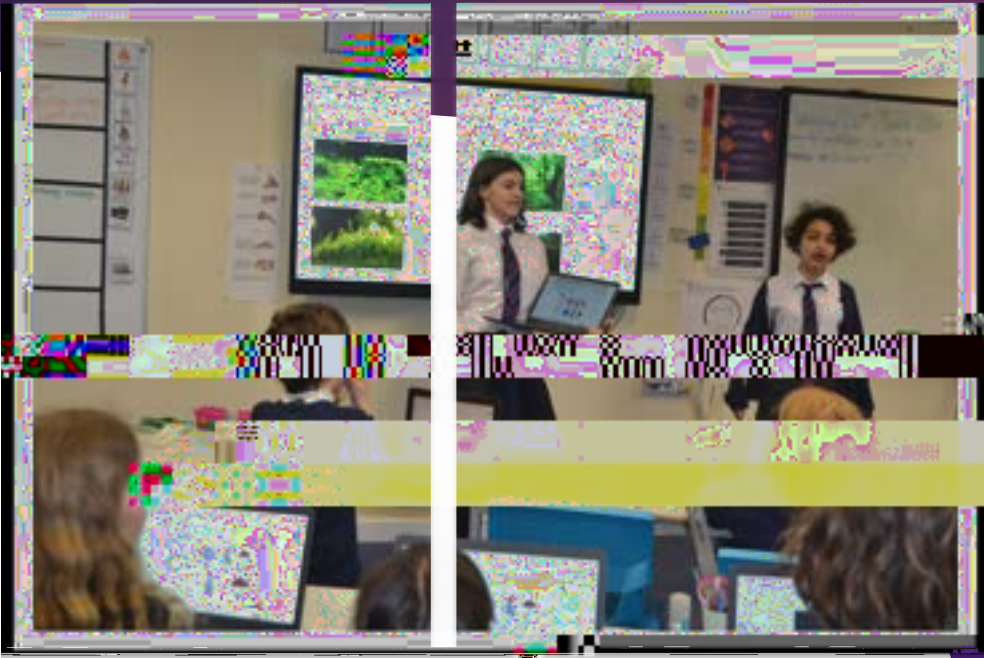
# Year 4 Longleat trip



# Year 4 Longleat trip

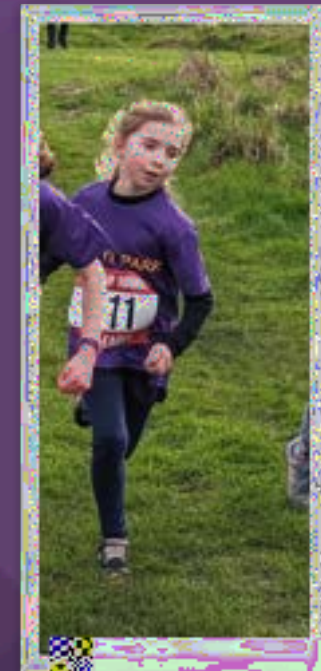


# KS3 Digital Leaders



! "\$ % & # ' ( ) #  
\*) + , - % ' , ( \$ % + \* ) . # ' \$ ( # & - / / 0 1 " # 0 2 # ' \$ ( # 0 , 3 ( 1 # 4 \$ \* , 3 1 ( ) # 5 # ' \$ ( \* 1 # & - ' 6 ( 4 " # 7 ) 0 8 , ( 3 . ( # ) 0 " # 0 ) , 9 #

# Avanti Park Cross Country



---

# Year 2 Interhouse Sports

---







# Year of the Recorder Concert



O Wed e da h Ma ch i f APSj i ed  
i h i f i he ch i F e de  
he eade hi fA a Seg a a d Tabea Deg  
f ca ich b Jackda ce eb a e he  
Yea f he Rec de e f he ica  
J h a Magic F e chi d e f Yea  
a e ded a i gg cke ie ec de  
a g ide b a i ged i e f he  
ch

Back i Feb a A a Tabea ed a h e ch  
a e b he a k h f Yea i d ce  
he iece a d he i a a a e f had k  
f c i he i e i i he Big Nigh he e e  
e f ed a a gea die ce fi i g ca  
e e he Chee e G ai

We d e a he e f e f c age  
e i ie ce e e e a ce had k a big ha k  
A a Tabeaf a e i di g he h e  
hi g



# First Aid at Avanti Park









---

# Events

---



# Traffic and Pedestrian Management Plan

## TRAFFIC AND PEDESTRIAN MANAGEMENT PLAN

### Pedestrian Movement:

We ask all parents to ensure their children walk, cycle or scoot to school where possible.

Parents, pupils, and staff are asked to use the pavements and to be thoughtful

about other pedestrians' using Park Road.

Pupils on scooters and bikes are requested to walk their bikes once they reach the boundaries of the school, at the main school entrance and down the school road to the pond gate.

There are several stone and brick walls bordering the school grounds including a

low wall on the edge of the neighbouring Christchurch Parish Hall. We request

that parents do not let their children walk along these walls as we cannot guarantee their safety.

No pedestrians to walk to or from the pond gate through the car park

### Vehicle Movement:

As a school community our aim is to limit vehicles entering Park Road as it is a no through road and there is very limited parking on the road. We request that

parents driving from a distance to the school park in one of the local car parks or in the surrounding area and walk their children into school.

Limiting vehicle meaehe.

# Special Thanks



Special Thanks

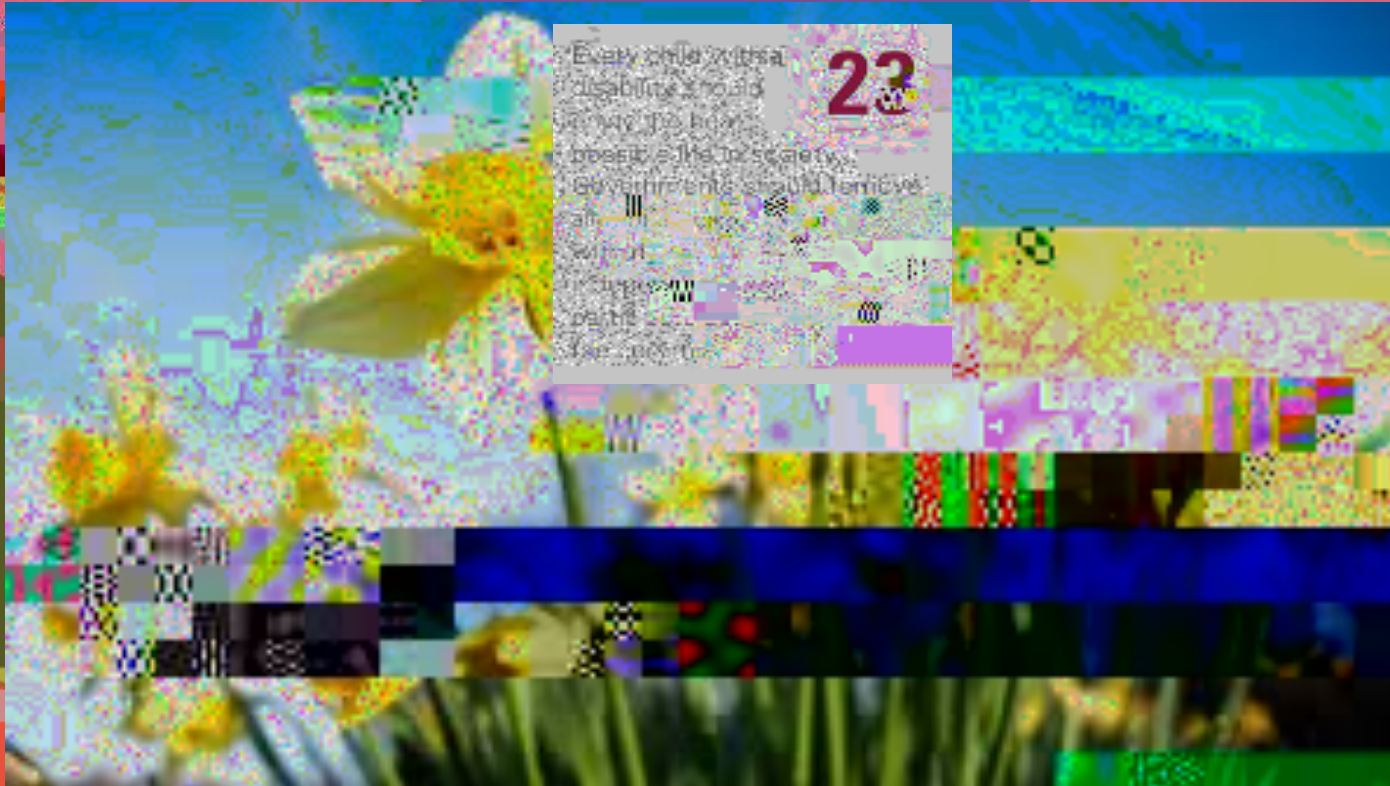
in the way why are you  
and I am  
S...  
G...  
a...  
I...  
th...  
S...  
G...  
I...





# Stay Safe, Be Well

Right of the week



AVANTI PARK SCHOOLS

